

29.MAR
2022

HOT
SALE

**CONCRETE
MACHINERY**



BUY IT
OR
MISS IT.



**MIXER
TRUCK**
**DUMP
TRUCK**



**ROAD
MACHINERY**



**PROMOTION
BROCHURE**



CONCRETE
MACHINERY



ONLY 5 UNITS

SYM5352THB 510C-10
Output low-pressure: 180m³/h
Output high-pressure: 120m³/h
Delivery cylinder diameter: 260mm
Stroke length: 2100mm
Engine: VOLVO D13C460S EUV
Emission: China V (China III adjustable)
Production date of Chassis: 2020
Production date of X-unit: 2021



ONLY 7 UNITS

SYM5446THB 560C-8B
Output low-pressure: 180m³/h
Output high-pressure: 125m³/h
Delivery cylinder diameter: 260mm
Stroke length: 2100mm
Engine: VOLVO D13C500S EUV
Emission: China V (China III adjustable)
Production date of Chassis: 2020
Production date of X-unit: 2021



ONLY 6 UNITS

SYM5446THBE 600C-10
Output low-pressure: 180m³/h
Output high-pressure: 125m³/h
Delivery cylinder diameter: 260mm
Stroke length: 2100mm
Engine: VOLVO D13C500S EUV
Emission: China V (China III adjustable)
Production date of Chassis: 2020
Production date of X-unit: 2021



ONLY 6 UNITS

SYM5447THB 560C-8A
Output low-pressure: 180m³/h
Output high-pressure: 125m³/h
Delivery cylinder diameter: 260mm
Stroke length: 2100mm
Engine: ISUZU 6WG1-TCG51
Emission: China V
Production date of Chassis: 2021
Production date of X-unit: 2021



Chassis of ISUZU



ONLY 1 UNIT

SY5165THBEV-9020C-10EV
Output low-pressure: 90m³/h
Output high-pressure: 50m³/h
Rated Power of Upper Engine: 132kW
Chassis Engine: DONGFENG EQ1180GEVJ5
Rated Power of Chassis Engine: 80kW/1270rpm
Production date: 2021



ONLY 18 UNITS

HSP 550 DUO
Max. flow rate: 2x6 m³/h
Max. continuous delivery pressure: 30 bar
Delivery cylinder diameter: 180mm
Suction valve diameter: 150mm
Discharge valve diameter: 100mm
Production date: 2018



MIXER
TRUCK
DUMP
TRUCK



ONLY 1 UNIT

SY306C-6
Rudder Direction: Left
Mixing capacity: 6m³
Curb weight: 10850kg
GVW: 25250kg
Engine: Hino JO8E-VA
Emissions: Euro III
Production date of Vehicle: 2020



ONLY 2 UNITS

SY308C-8
Rudder Direction: Left
Mixing capacity: 8m³
Curb weight: 11850kg
GVW: 31050kg
Engine: Hino JO8E-VA
Emissions: Euro III
Production date of Vehicle: 2021



ONLY 4 UNITS

SY309C-8(ECE)
Rudder Direction: Left
Mixing capacity: 9m³
Curb weight: 14800kg
GVW: 29800kg
Engine: Hino P11C-UH
Emissions: Euro III
Production date of Vehicle: 2020



ONLY 1 UNIT

SY312C-6W(V)
Rudder Direction: Left
Mixing capacity: 12m³
Curb weight: 14650kg
GVW: 43450kg
Engine: Weichai WP10.336E53
Emissions: China V
Production date of Vehicle: 2020



ONLY 1 UNIT

SY412C-8(V)-D
Code: GJB100000133
Rudder Direction: Left
Mixing capacity: 12m³
Curb weight: 13900kg
GVW: 31000kg
Engine: Hino JO8E-YA Emissions: China V
Production date of Vehicle: 2021



ONLY 3 UNITS

SY412C-8(V)-D
Code: GJB100000056
Rudder Direction: Left
Mixing capacity: 12m³
Curb weight: 13700kg
GVW: 31000kg
Engine: Hino JO8E-YA Emissions: China V
Production date of Vehicle: 2020



ONLY 10 UNITS

SYZ320C-8SQ(380)
Code: 14499946
Cargo capacity: 20m³
Rudder Direction: Left
Engine: Sany D09C5-380E0
Emissions: China V
Dumpbox Dimensions(mm): 5800x2400x1500
Production date of Vehicle: 2020



ONLY 7 UNITS

SYM3257ZZX1E
Code: ZZX200000043
Cargo capacity: 20m³
Rudder Direction: Left
Engine: Sany D12.465
Emissions: China V
Dumpbox Dimensions(mm): 6000x2400x1500
Production date of Vehicle: 2020



ONLY 2 UNITS

SYZ323C-8
Code: 14214458
Cargo capacity: 23m³
Rudder Direction: Right
Engine: Hino JO8E-UP
Emissions: Euro III
Dumpbox Dimensions(mm): 6000x2300x1700
Production date of Vehicle: 2021



ONLY 1 UNIT

SYZ326C-8W(R)
Code: ZZX200000045
Cargo capacity: 26m³
Rudder Direction: Right
Engine: WEICHAI WP12.430E201
Emissions: Euro II
Dumpbox Dimensions(mm): 6200x2350x1800
Production date of Vehicle: 2021



ONLY 5 UNITS

SYM3312ZZX1E
Code: ZZX200000063
Cargo capacity: 26m³
Rudder Direction: Left
Engine: Sany D12.435
Emissions: China V
Dumpbox Dimensions(mm): 7600x2350x1500
Production date of Vehicle: 2020



ONLY 1 UNIT

SPR260C-8
Code: 14349470
Operating weight: 26000kg
Ground Pressure: 200-520kPa
Single Tire Load: 2.88t
Engine: WEICHAI WP6G190E301
Production date of Vehicle: 2019



ONLY 1 UNIT

STG140C-8
Code: PDJ100000043
Operating weight: 11700kg
Length of blade: 10ft
Rated power: 97kW
Engine: Dongfeng Cummins QSB4.5
Emission: China III
Production date of Vehicle: 2021



ONLY 78 UNITS

STG170C-8S
Code: PDJ100000042
Operating weight: 13700kg
Length of blade: 12ft
Rated power: 118kW
Engine: Weichai WP6G160E330
Emission: China III
Production date of Vehicle: 2021



ONLY 1 UNIT

STG190C-8S
Code: PDJ100000025
Operating weight: 15600kg
Length of blade: 12ft
Rated power: 142kW
Engine: Dongfeng Cummins 6BTA5.9-C190-II
Emission: EU Stage II
Production date of Vehicle: 2021





Vertical Reach:
50.1m

ONLY
5
UNITS



SYM5352THB 510C-10 TRUCK-MOUNTED CONCRETE PUMP

Energy-saving

Pump efficiency is increased up to 25% while fuel consumption is decreased by up to 10%.

Safety

Our truck mounted concrete pump exemplifies Sany's precise, rigorous manufacturing philosophy and uncompromising focus on safety.

Highly Wear Resistant Parts

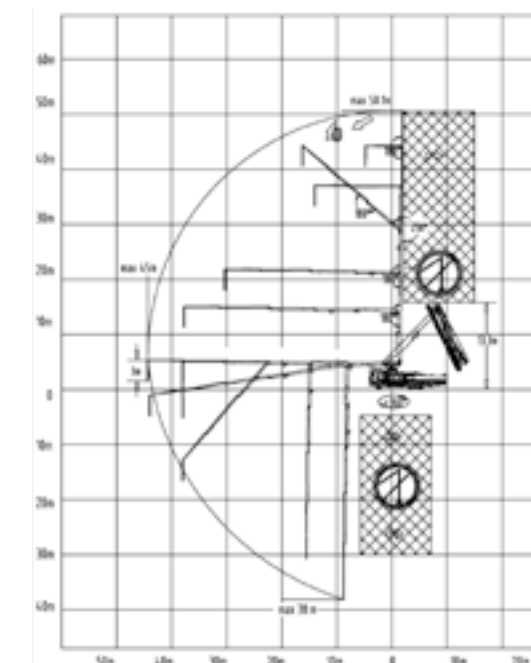
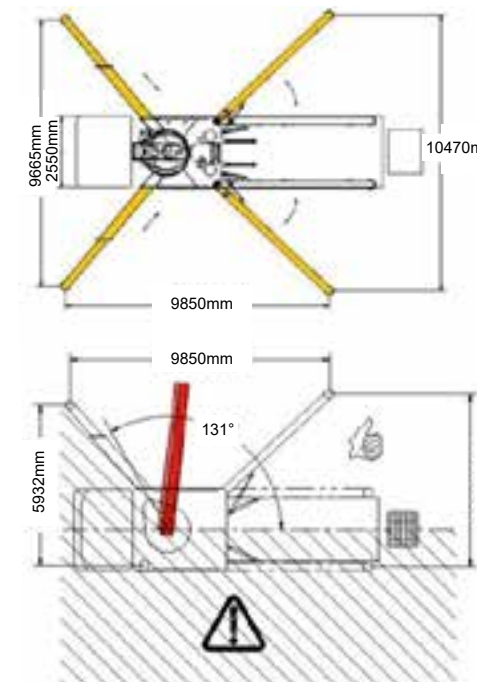
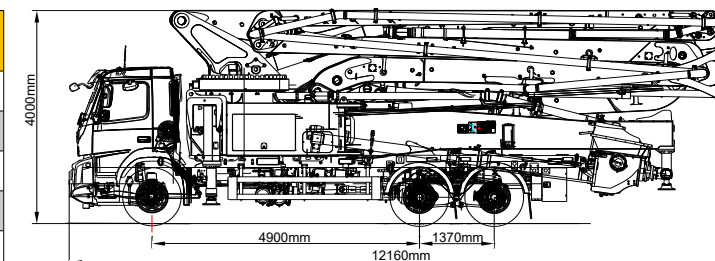
The highly wear resistant parts improve efficiency and reduce down time.

Self-diagnosis Technology

Continually monitors more than 200 aspects of the system during operation. Faults are displayed on the monitor. Review of the detected faults can reduce troubleshooting time by 70%.

TECHNICAL SPECIFICATION

Model			SYM5352THB 510C-10
Overall Specification	Length(mm)		12160
	Width(mm)		2550
	Height(mm)		4000
	Dead Weight(kg)		35000
Boom & Outrigger Specification	Vertical Reach(m)		50.1
	Horizontal Reach(m)		45
	Reach Depth(m)		36.7
	Min. Unfolded Reach(m)		13.3
	1st Section	Length(mm)	9335
		Articulation(°)	89
	2nd Section	Length(mm)	6871
		Articulation(°)	180
	3rd Section	Length(mm)	7035
		Articulation(°)	180
	4th Section	Length(mm)	8270
		Articulation(°)	230
	5th Section	Length(mm)	8525
		Articulation(°)	180
	6th Section	Length(mm)	6025
		Articulation(°)	180
	Rotation(°)		±360
	Front Outrigger Spread L-R(mm)		9665
	Rear Outrigger Spread L-R(mm)		10470
Pumping System Specification	Output(m³/h)	Low-Pressure	180
		High-Pressure	120
	Pressure (MPa)	Low-Pressure	8.3
		High-Pressure	13
	Max. strokes per minute (times/min)	Low-Pressure	29
		High-Pressure	20
	Delivery Cylinder Diameter(mm)		260
	Stroke Length(mm)		1900
	Hydraulic System		Open Type
	Hydraulic System Oil Pressure(MPa)		32
	Oil Tank Capacity(L)		680
	Water Tank Capacity(L)		620
	Pipe Diameter(mm)		125
	End Hose Length(m)		3
	End Hose Diameter(mm)		125
	Chassis Specification	Chassis Brand	
Chassis Model		FM460 64R B	
Engine Type		D13C460S EUV	
Engine Maximum Net Power(kW/rpm)		337/1400-1900	
Emission Standard		China V (China III adjustable)	
Fuel Tank Capacity(L)		400	
Displacement(L)		12.777	
Max. Speed(km/h)		85	



SANY HEAVY INDUSTRY CO., LTD.

SANY Industry Town, Changsha Economic and Technological Development Zone,
Hunan Province, China
Service Line: +86 4006 098 318 E-mail: crd@sany.com.cn

SANY[®]
QUALITY CHANGES THE WORLD.



Vertical Reach:
56m



ONLY
7
UNITS

SYM5446THB 560C-8B TRUCK-MOUNTED CONCRETE PUMP

Energy-saving

Pump efficiency is increased up to 25% while fuel consumption is decreased by up to 10%.

Safety

Our truck mounted concrete pump exemplifies Sany's precise, rigorous manufacturing philosophy and uncompromising focus on safety.

Highly Wear Resistant Parts

The highly wear resistant parts improve efficiency and reduce down time.

Self-diagnosis Technology

Continually monitors more than 200 aspects of the system during operation. Faults are displayed on the monitor. Review of the detected faults can reduce troubleshooting time by 70%.

TECHNICAL SPECIFICATION

Model		SYM5446THB 560C-8B
Overall Specification	Length(mm)	13980
	Width(mm)	2550
	Height(mm)	4000
	Dead Weight(kg)	44000
Boom & Outrigger Specification	Vertical Reach(m)	56
	Horizontal Reach(m)	51
	Reach Depth(m)	36.6
	Unfolding Reach(m)	15.2
	1st Section	Length(mm)
		Articulation(°)
	2nd Section	Length(mm)
		Articulation(°)
	3rd Section	Length(mm)
		Articulation(°)
	4th Section	Length(mm)
		Articulation(°)
	5th Section	Length(mm)
		Articulation(°)
	6th Section	Length(mm)
		Articulation(°)
	Rotation(°)	
	±360 °	
	Front Outrigger Spread L-R(mm)	
	9470	
	Rear Outrigger Spread L-R(mm)	
	12680	
Pumping System Specification	Output (m³/h)	Low-Pressure
		180
		High-Pressure
		125
	Pressure (MPa)	Low-Pressure
		8.3
		High-Pressure
		12
	Max. strokes per minute (times/min)	Low-Pressure
		29
		High-Pressure
		19
	Delivery Cylinder Diameter(mm)	
	260	
Chassis Specification	Stroke Length(mm)	
	2100	
	Hydraulic System	
	Open	
	Hydraulic System Oil Pressure(MPa)	
	32	
	Oil Tank Capacity(L)	
	680	
	Water Tank Capacity(L)	
	620	
	Pipe Diameter(mm)	
	125	
	End Hose Length(m)	
	3	
	End Hose Diameter(mm)	
	125	
	Chassis Brand	
	VOLVO	
	Chassis Model	
	FM500 84R B	
	Engine Type	
	D13C500S EUV	
	Engine Maximum Net Power(kW/rpm)	
	368/1800	
	Emission Standard	
	China V (China III adjustable)	
	Fuel Tank Capacity(L)	
	410	
	Displacement(L)	
	12.777	
	Max. Speed(km/h)	
	85	

SANY HEAVY INDUSTRY CO., LTD.

SANY Industry Town, Changsha Economic and Technological Development Zone,
Hunan Province, China

Service Line: +86 4006 098 318 E-mail: crd@sany.com.cn

SANY[®]
QUALITY CHANGES THE WORLD.



Vertical Reach:
59.1m

ONLY
6
UNITS



SYM5446THBE 600C-10 TRUCK-MOUNTED CONCRETE PUMP

Energy-saving

Pump efficiency is increased up to 25% while fuel consumption is decreased by up to 10%.

Safety

Our truck mounted concrete pump exemplifies Sany's precise, rigorous manufacturing philosophy and uncompromising focus on safety.

Highly Wear Resistant Parts

The highly wear resistant parts improve efficiency and reduce down time.

Self-diagnosis Technology

Continually monitors more than 200 aspects of the system during operation. Faults are displayed on the monitor. Review of the detected faults can reduce troubleshooting time by 70%.

TECHNICAL SPECIFICATION

Model		SYM5446THBE 600C-10
Overall Specification	Length(mm)	13770
	Width(mm)	2550
	Height(mm)	4000
	Dead Weight(kg)	44000
Boom & Outrigger Specification	Vertical Reach(m)	59.1
	Horizontal Reach(m)	53.9
	Reach Depth(m)	41.4
	Unfolding Reach(m)	13.6
	1st Section	Length(mm)
		Articulation(°)
	2nd Section	Length(mm)
		Articulation(°)
	3rd Section	Length(mm)
		Articulation(°)
	4th Section	Length(mm)
		Articulation(°)
	5th Section	Length(mm)
		Articulation(°)
	6th Section	Length(mm)
		Articulation(°)
	Rotation(°)	
	Front Outrigger Spread L-R(mm)	
	Rear Outrigger Spread L-R(mm)	
Pumping System Specification	Output (m³/h)	Low-Pressure
		High-Pressure
	Pressure (MPa)	Low-Pressure
		High-Pressure
	Max. strokes per minute (times/min)	Low-Pressure
		High-Pressure
	Delivery Cylinder Diameter(mm)	
	Stroke Length(mm)	
	Hydraulic System	
	Hydraulic System Oil Pressure(MPa)	
	Oil Tank Capacity(L)	
	Water Tank Capacity(L)	
	Pipe Diameter(mm)	
	End Hose Length(m)	
	End Hose Diameter(mm)	
Chassis Specification	Chassis Brand	
	Chassis Model	
	Engine Type	
	Engine Maximum Net Power(kW/rpm)	
	Emission Standard	
	Fuel Tank Capacity(L)	
	Displacement(L)	
	Max. Speed(km/h)	

SANY HEAVY INDUSTRY CO., LTD.

SANY Industry Town, Changsha Economic and Technological Development Zone,
Hunan Province, China

Service Line: +86 4006 098 318 E-mail: crd@sany.com.cn

SANY[®]
QUALITY CHANGES THE WORLD.



Vertical Reach:
56m

ONLY
6
UNITS



SYM5447THB 560C-8A TRUCK-MOUNTED CONCRETE PUMP

Energy-saving

Pump efficiency is increased up to 25% while fuel consumption is decreased by up to 10%.

Safety

Our truck mounted concrete pump exemplifies Sany's precise, rigorous manufacturing philosophy and uncompromising focus on safety.

Highly Wear Resistant Parts

The highly wear resistant parts improve efficiency and reduce down time.

Self-diagnosis Technology

Continually monitors more than 200 aspects of the system during operation. Faults are displayed on the monitor. Review of the detected faults can reduce troubleshooting time by 70%.

TECHNICAL SPECIFICATION

Model		SYM5447THB 560C-8A
Overall Specification	Length(mm)	13950
	Width(mm)	2550
	Height(mm)	4000
	Dead Weight(kg)	44000
Boom & Outrigger Specification	Vertical Reach(m)	56
	Horizontal Reach(m)	51
	Reach Depth(m)	36.6
	Unfolding Reach(m)	15.2
	1st Section	Length(mm)
		Articulation(°)
	2nd Section	Length(mm)
		Articulation(°)
	3rd Section	Length(mm)
		Articulation(°)
	4th Section	Length(mm)
		Articulation(°)
	5th Section	Length(mm)
		Articulation(°)
	6th Section	Length(mm)
		Articulation(°)
	Rotation(°)	
	Front Outrigger Spread L-R(mm)	
	Rear Outrigger Spread L-R(mm)	
Pumping System Specification	Output (m³/h)	Low-Pressure
		High-Pressure
	Pressure (MPa)	Low-Pressure
		High-Pressure
	Max. strokes per minute (times/min)	Low-Pressure
		High-Pressure
	Delivery Cylinder Diameter(mm)	
	Stroke Length(mm)	
	Hydraulic System	
	Hydraulic System Oil Pressure(MPa)	
	Oil Tank Capacity(L)	
	Water Tank Capacity(L)	
	Pipe Diameter(mm)	
	End Hose Length(m)	
Chassis Specification	End Hose Diameter(mm)	
	Chassis Brand	
	Chassis Model	
	Engine Type	
	Engine Maximum Net Power(kW/rpm)	
	Emission Standard	
	Fuel Tank Capacity(L)	
	Displacement(L)	
	Max. Speed(km/h)	

SANY HEAVY INDUSTRY CO., LTD.

SANY Industry Town, Changsha Economic and Technological Development Zone,
Hunan Province, China
Service Line: +86 4006 098 318 E-mail: crd@sany.com.cn

SANY[®]
QUALITY CHANGES THE WORLD.

SY5165THBEV-9020C-10EV LINE PUMP



TECHNICAL SPECIFICATIONS

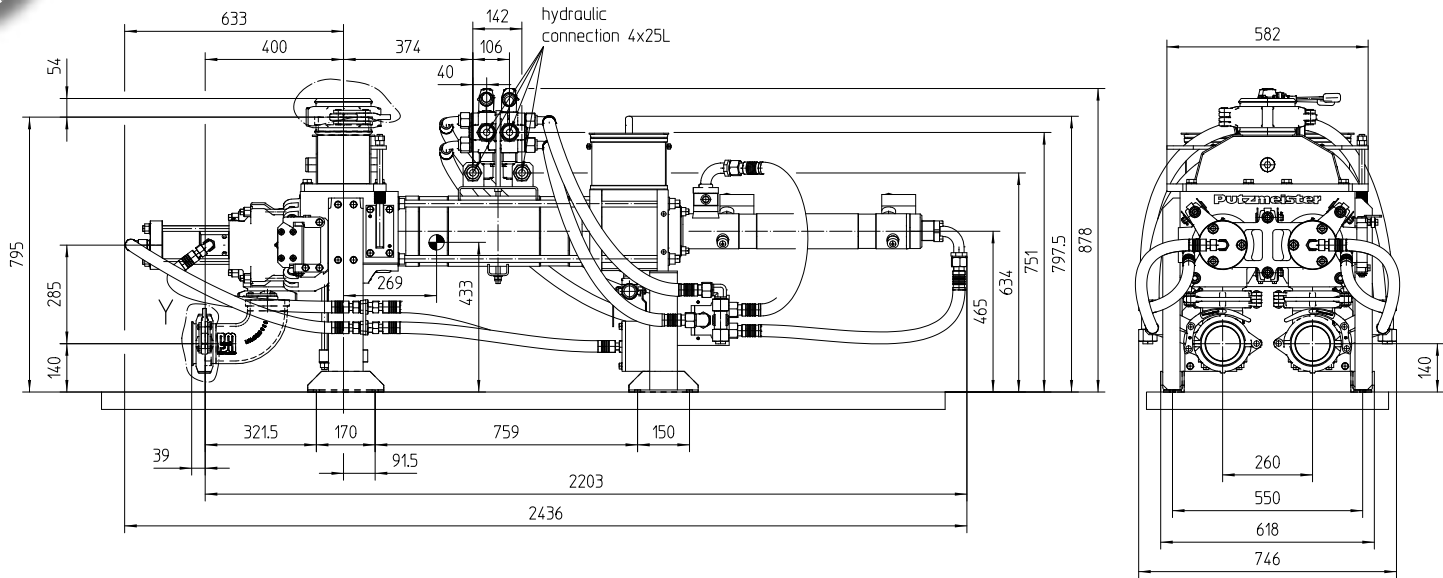
产品型号 Product Model			SY5165THBEV-9020C-10EV	
整车参数 Dimensions	全长 Overall Length(mm)		9467	
	总宽 Overall Width(mm)		2500	
	总高 Overall Height(mm)		2760	
	上料高度 (H1) Feeding heigh		1500	
	轴距 (L1) Wheelbase		5000	
	总重 Gross Weight(kg)		16100	
	泵送参数 Pumping Specifications	混凝土理论输送压力 Max. Delivery Pressure (theoretical)	低压 Low Pressure(MPa)	10
高压 High Pressure(MPa)			25	
混凝土理论输送量 Max. Concrete Output (theoretical)		低压 Low Pressure(m³/h)	90	
		高压 High Pressure(m³/h)	50	
理论泵送次数 Pumping Times (theoretical)		低压 Low Pressure(times/min)	22	
		高压 High Pressure(times/min)	12	
输送缸 Delivery cylinder		缸径 Bore(mm)	230	
		行程 Stroke(mm)	1600	
料斗容积 Hopper Capacity(m³)		0.6		
液压油箱容积 Hydraulic Tank Capacity(L)		600		
上装电机额定功率 Rated Power of Upper Engine(kW)		132		
底盘参数 Chassis Specifications	底盘品牌 Chassis Brand		DONGFENG(Pure Electric)	
	底盘型号 Chassis Model		EQ1180GEVJ5	
	最大允许总质量 Maximum Allowable Total Mass(kg)		18000	
	发动机型号 Model of Engine		TZ370XS-LKM1103	
	发动机功率 Engine Rated Power(kW/rpm)		80/1270	
	发动机最大净功率 Engine Max Net Power(kW/rpm)		160/4500	
	轮胎规格 Type Specifications		295/80R22.5	
	动力电池总储电量 Power Battery(kWh)		218.55	
	续航里程 Cruising Distance(km)		300	



HSP 550 DUO SOLID PUMP 工业泵

ONLY
18
UNITS

Type 型号	HSP 550 DUO SOLID PUMP 工业泵
Min. Flow Rate 最低流量	0.5 m³/h
Max. Flow Rate (@ ideal conditions) 最大流量	2×6 m³/h
Max. Continuous Delivery Pressure 最大连续运行压力	30 bar
Delivery Cylinder Length 输送缸长度	500 mm
Delivery Cylinder Diameter 输送缸直径	180 mm
Suction Valve Diameter 进口阀直径	150 mm
Discharge Valve Diameter 出口阀直径	100 mm
Connection Flange at Suction Flange 进口连接端	卡箍 SK 150 (Putzmeister Coupling)
Connection Flange at Discharge Flange 出口连接端	卡箍 SK 100 (Putzmeister Coupling)
Weight (without Material and Oil), approx. 重量	700 kg
Quotation Drawing (non-binding!)	KS 922642



SANY HEAVY INDUSTRY CO., LTD.
SANY Industry Town, Changsha Economic and Technological Development Zone,
Hunan Province, China
Service Line: +86 4006 098 318 E-mail: crd@sany.com.cn

SANY®

SY306C-6 MIXER TRUCK

SY306C-6 搅拌车

LEADING EDGES STEERING TECHNOLOGY

The large displacement power steering pump reduces operator effort by 40%. By optimizing chassis geometry and front the front axle steering angle, the turning circle is reduced by 15%.

ONLY
1
UNIT

ENERGY-SAVING TECHNOLOGY

The truck is light in weight but it undertakes large weight. With dual-circuit power mode, the engine matches the transmission well. It saves 10% of fuel consumption.

ANTI-BUILDUP TECHNOLOGY

An innovative front taper and ball-crown connecting structure, the mixer is shaped to prevent accumulation at front and rear tapers. The flushing device is installed at the rear taper, in order to clear accumulated concrete in the dead space. The residual rate at the discharging outlet is declined by 0.4%.

LOW DECK TECHNOLOGY

The truck is equipped with ultra-high strength, integrated auxiliary frame to ensure its stability and high strength. It adapts to various rough conditions meanwhile prolongs its service life.

IMPROVED BRAKING

By making full use of engine braking, braking distance has been reduced by 15% and brake lining wear is decreased by 50%. Sany uses a high volume air compressor, high quality piping, and new sealing technology that shortens air and build up time to quicken brake response time.



TECHNICAL PARAMETER

技术参数

Model 型号			SY306C-6
整车参数 Overall Parameters	Rudder Direction	左右舵	左舵 Left
	Curb Weight(kg)	整备质量 (kg)	10850
	GVW(kg)	最大允许总质量 (kg)	25250
	Dimension (L×H×W)(mm)	整车尺寸 (长 × 宽 × 高)(mm)	8030×2500×3700
	Wheel Base(mm)	轴距 (mm)	3025+1300
	Min. Ground Clearance(mm)	最小离地间隙 (mm)	≥240
	Min. Turning Diameter(m)	最小转弯直径 (m)	16
	Fuel Consumption(L/100km)	百公里油耗 (L/100km)	≤35
	Braking Distance(V ₀ =30km/h)(m)	制动距离 (V ₀ =30km/h) (m)	≤10(Full load) ≤9(Empty load)
发动机参数 Engine	Bore(mm)×Stroke(mm)	缸径 (mm)× 行程 (mm)	φ112×130
	Displacement(L)	排量 (L)	7.684
	Rated Power/Rev Speed(kW/rpm)	额定功率 / 转速 (kW/rpm)	202/2200
	Max. Torque/Rev Speed(N.m/rpm)	最大扭矩 / 转速 (N.m/rpm)	1000/1500
	Emissions	排放标准	Euro III
上装参数 Drum	Capacity(m³)	搅动容量 (m³)	6
	Feeding Speed(m³/min)	进料速度 (m³/min)	≥8
	Discharge Speed(m³/min)	出料速度 (m³/min)	≥5
	Discharge Residual Rate	出料残余率	≤0.5%
	Slump(mm)	坍落度范围 (mm)	50~210
	Water Tank Capacity(L)	水箱容积 (L)	300
	Water Pressure(MPa)	工作压力 (Mpa)	0.35~0.38
	Reducer	减速机	PMB6.0
	Hydraulic Pump	油泵	力士乐 Rexroth A10VGT071
	Motor	马达	力士乐 Rexroth A2FMT080
底盘配置 Chassis	Engine Model	发动机	日野 Hino J08E-VA
	Gear-box	变速箱	法士特 Fast 9JS119TA
	Front Axle(t)	前桥 (t)	5
	Intermediate, Rear Axle(t)	中、后桥 (t)	2×10
	Cab	驾驶室	齐星 Qixing Cab
	Tyre	轮胎	10.00R20
	Brake	制动器	Front : φ400mm×150mm Rear : φ410mm×180mm
	Fuel Tank Capacity(L)	燃油箱 (L)	200

OPTIONAL CONFIGURATION

可选配置

Model 型号		SY306C-6		
功能选配 Optional Functions	Item 名称	●Standard ● 标配	○Option ○ 选配	-None - 无
	Engine	-		
	Oil Pump	-		
	Motor	-		
	GPS Terminal-EMEA	-		
	Mixer drum forward and backward rotation sensor (GPS Terminal-EMEA must be installed)	-		
	Blind Zone Radar	-		
	Rear View Camera	-		
	ABS(Axles need replacing)	-		
	Cab Roof Light	-		
	Tyre	○ 11R22.5		
	Mixer Drum Cleaning Device	○		
	Hopper Components	●		
	Special Coating	○		
	Water Tank Capacity	-		
the Upper Guardrail Protecting Net of Mixer Drum	-			



SANY®

SY308C-8 MIXER TRUCK

SY308C-8 搅拌车

LEADING EDGES STEERING TECHNOLOGY

The large displacement power steering pump reduces operator effort by 40%. By optimizing chassis geometry and front the front axle steering angle, the turning circle is reduced by 15%.

ONLY
2
UNITS

ENERGY-SAVING TECHNOLOGY

The truck is light in weight but it undertakes large weight. With dual-circuit power mode, the engine matches the transmission well. It saves 10% of fuel consumption.

ANTI-BUILDUP TECHNOLOGY

An innovative front taper and ball-crown connecting structure, the mixer is shaped to prevent accumulation at front and rear tapers. The flushing device is installed at the rear taper, in order to clear accumulated concrete in the dead space. The residual rate at the discharging outlet is declined by 0.4%.

LOW DECK TECHNOLOGY

The truck is equipped with ultra-high strength, integrated auxiliary frame to ensure its stability and high strength. It adapts to various rough conditions meanwhile prolongs its service life.

IMPROVED BRAKING

By making full use of engine braking, braking distance has been reduced by 15% and brake lining wear is decreased by 50%. Sany uses a high volume air compressor, high quality piping, and new sealing technology that shortens air and build up time to quicken brake response time.



TECHNICAL PARAMETER

技术参数

Model 型号			SY308C-8
整车参数 Overall Parameters	Rudder Direction	左右舵	左舵 Left
	Curb Weight(kg)	整备质量 (kg)	11850
	GVW(kg)	最大允许总质量 (kg)	31050
	Dimension (L×H×W)(mm)	整车尺寸 (长 × 宽 × 高)(mm)	8700×2500×3880
	Wheel Base(mm)	轴距 (mm)	3225+1300
	Min. Ground Clearance(mm)	最小离地间隙 (mm)	≥240
	Min. Turning Diameter(m)	最小转弯直径 (m)	16
	Fuel Consumption(L/100km)	百公里油耗 (L/100km)	≤38
	Braking Distance(V ₀ =30km/h)(m)	制动距离 (V ₀ =30km/h) (m)	≤10(Full load) ≤9(Empty load)
发动机参数 Engine	Bore(mm)×Stroke(mm)	缸径 (mm)× 行程 (mm)	φ112×130
	Displacement(L)	排量 (L)	7.684
	Rated Power/Rev Speed(kW/rpm)	额定功率 / 转速 (kW/rpm)	202/2200
	Max. Torque/Rev Speed(N.m/rpm)	最大扭矩 / 转速 (N.m/rpm)	1000/1500
	Emissions	排放标准	Euro III
上装参数 Drum	Capacity(m³)	搅动容量 (m³)	8
	Feeding Speed(m³/min)	进料速度 (m³/min)	≥8
	Discharge Speed(m³/min)	出料速度 (m³/min)	≥5
	Discharge Residual Rate	出料残余率	≤0.5%
	Slump(mm)	坍落度范围 (mm)	50~210
	Water Tank Capacity(L)	水箱容积 (L)	400
	Water Pressure(MPa)	工作压力 (Mpa)	0.35~0.38
	Reducer	减速机	PMB6.5
	Hydraulic Pump	油泵	力士乐 Rexroth A10VGT071
	Motor	马达	力士乐 Rexroth A2FMT080
底盘配置 Chassis	Engine Model	发动机	日野 Hino J08E-VA
	Gear-box	变速箱	法士特 Fast 9JS119TA
	Front Axle(t)	前桥 (t)	5
	Intermediate, Rear Axle(t)	中、后桥 (t)	2×10
	Cab	驾驶室	三一 SANY Cab CB318
	Tyre	轮胎	10.00R20
	Brake	制动器	Front: φ400mm × 130mm Rear: φ410mm × 180mm
	Fuel Tank Capacity(L)	燃油箱 (L)	200

OPTIONAL CONFIGURATION

可选配置

Model 型号		SY308C-8			
功能选配 Optional Functions	Item 名称	●Standard ● 标配	○Option ○ 选配	-None - 无	
	Engine	发动机			-
	Oil Pump	油泵			-
	Motor	马达			-
	GPS Terminal-EMEA	树根互联盒子			○
	Mixer drum forward and backward rotation sensor (GPS Terminal-EMEA must be installed)	搅拌筒正反转 (必须安装树根盒子)			○
	Blind Zone Radar	盲区雷达			○
	Rear View Camera	倒车摄像头			○
	ABS(Axles need replacing)	ABS (需换车桥)			-
	Cab Roof Light	驾驶室警示顶灯			○
	Tyre	轮胎			○ 11R22.5
	Mixer Drum Cleaning Device	搅拌筒清扫杆			○
	Hopper Components	接料斗			●
	Special Coating	特殊涂装			○
	Water Tank Capacity	水箱容积			○ 600L Al 铝合金 ○ 800L Al 铝合金
	the Upper Guardrail Protecting Net of Mixer Drum	搅拌筒上部护栏保护筛网			-



SANY®

SY309C-8(ECE) MIXER TRUCK

SY309C-8(ECE) 搅拌车

LEADING EDGES STEERING TECHNOLOGY

The large displacement power steering pump reduces operator effort by 40%. By optimizing chassis geometry and front axle steering angle, the turning circle is reduced by 15%.

ONLY
4
UNITS

ENERGY-SAVING TECHNOLOGY

The truck is light in weight but it undertakes large weight. With dual-circuit power mode, the engine matches the transmission well. It saves 10% of fuel consumption.

ANTI-BUILDUP TECHNOLOGY

An innovative front taper and ball-crown connecting structure, the mixer is shaped to prevent accumulation at front and rear tapers. The flushing device is installed at the rear taper, in order to clear accumulated concrete in the dead space. The residual rate at the discharging outlet is declined by 0.4%.

LOW DECK TECHNOLOGY

The truck is equipped with ultra-high strength, integrated auxiliary frame to ensure its stability and high strength. It adapts to various rough conditions meanwhile prolongs its service life.

IMPROVED BRAKING

By making full use of engine braking, braking distance has been reduced by 15% and brake lining wear is decreased by 50%. Sany uses a high volume air compressor, high quality piping, and new sealing technology that shortens air and build up time to quicken brake response time.



TECHNICAL PARAMETER

技术参数

Model 型号			SY309C-8(ECE)
整车参数 Overall Parameters	Rudder Direction	左右舵	左舵 left
	Curb Weight(kg)	整备质量 (kg)	14800 (ECE)
	GVW(kg)	最大允许总质量 (kg)	29800 (ECE)
	Dimension (L×H×W)(mm)	整车尺寸 (长 × 宽 × 高)(mm)	9300×2500×3960 (ECE)
	Wheel Base(mm)	轴距 (mm)	3545+1350
	Min. Ground Clearance(mm)	最小离地间隙 (mm)	≥240
	Min. Turning Diameter(m)	最小转弯直径 (m)	18
	Fuel Consumption(L/100km)	百公里油耗 (L/100km)	≤38
	Braking Distance(V ₀ =30km/h)(m)	制动距离 (V ₀ =30km/h) (m)	≤10(Full load) ≤9(Empty load)
发动机参数 Engine	Bore(mm)×Stroke(mm)	缸径 (mm)× 行程 (mm)	φ122×150
	Displacement(L)	排量 (L)	10.52
	Rated Power/Rev Speed(kW/rpm)	额定功率 / 转速 (kW/rpm)	240/2100
	Max. Torque/Rev Speed(N.m/rpm)	最大扭矩 / 转速 (N.m/rpm)	1420/1100
	Emissions	排放标准	Euro III
上装参数 Drum	Capacity(m³)	搅动容量 (m³)	9
	Feeding Speed(m³/min)	进料速度 (m³/min)	≥8
	Discharge Speed(m³/min)	出料速度 (m³/min)	≥5
	Discharge Residual Rate	出料残余率	≤0.5%
	Slump(mm)	坍落度范围 (mm)	50~210
	Water Tank Capacity(L)	水箱容积 (L)	400
	Water Pressure(MPa)	工作压力 (Mpa)	0.35~0.38
	Reducer	减速机	PMB6.5
	Hydraulic Pump	油泵	力士乐 Rexroth A10VGT071
	Motor	马达	力士乐 Rexroth A2FMT080
底盘配置 Chassis	Engine Model	发动机	潍柴 Weichai WP10.270E32
	Gear-box	变速箱	日野 Hino P11C-UH
	Front Axle(t)	前桥 (t)	7.5
	Intermediate, Rear Axle(t)	中、后桥 (t)	2×13
	Cab	驾驶室	三一 SANY Cab CB318
	Tyre	轮胎	10.00R20
	Brake	制动器	Front: φ410mm×160mm Rear: φ410mm×220mm
	Fuel Tank Capacity(L)	燃油箱 (L)	300

OPTIONAL CONFIGURATION

可选配置

Model 型号		SY309C-8(ECE)			
功能选配 Optional Functions	Item 名称		●Standard ● 标配	○Option ○ 选配	-None - 无
	Engine	发动机		-	
	Oil Pump	油泵		-	
	Motor	马达		-	
	GPS Terminal-EMEA	树根互联盒子		○	
	Mixer drum forward and backward rotation sensor (GPS Terminal-EMEA must be installed)	搅拌筒正反转 (必须安装树根盒子)		○	
	Blind Zone Radar	盲区雷达		○	
	Rear View Camera	倒车摄像头		○	
	ABS(Axles need replacing)	ABS (需换车桥)		●	
	Cab Roof Light	驾驶室警示顶灯		○	
	Tyre	轮胎		-	
	Mixer Drum Cleaning Device	搅拌筒清扫杆		○	
	Hopper Components	接料斗		●	
	Special Coating	特殊涂装		○	
	Water Tank Capacity	水箱容积		○ 600L AI 铝合金 ○ 800L AI 铝合金	
	the Upper Guardrail Protecting Net of Mixer Drum	搅拌筒上部护栏保护筛网		-	



SANY®

SY312C-6W(V) MIXER TRUCK

SY312C-6W(V) 搅拌车

LEADING EDGES STEERING TECHNOLOGY

The large displacement power steering pump reduces operator effort by 40%. By optimizing chassis geometry and front the front axle steering angle, the turning circle is reduced by 15%.

ONLY
1
UNIT

ENERGY-SAVING TECHNOLOGY

The truck is light in weight but it undertakes large weight. With dual-circuit power mode, the engine matches the transmission well. It saves 10% of fuel consumption.

ANTI-BUILDUP TECHNOLOGY

An innovative front taper and ball-crown connecting structure, the mixer is shaped to prevent accumulation at front and rear tapers. The flushing device is installed at the rear taper, in order to clear accumulated concrete in the dead space. The residual rate at the discharging outlet is declined by 0.4%.

LOW DECK TECHNOLOGY

The truck is equipped with ultra-high strength, integrated auxiliary frame to ensure its stability and high strength. It adapts to various rough conditions meanwhile prolongs its service life.

IMPROVED BRAKING

By making full use of engine braking, braking distance has been reduced by 15% and brake lining wear is decreased by 50%. Sany uses a high volume air compressor, high quality piping, and new sealing technology that shortens air and build up time to quicken brake response time.



TECHNICAL PARAMETER

技术参数

Model 型号			SY312C-6W(V)
整车参数 Overall Parameters	Rudder Direction	左右舵	左舵 Left
	Curb Weight(kg)	整备质量 (kg)	14650
	GVW(kg)	最大允许总质量 (kg)	43450
	Dimension (L×H×W)(mm)	整车尺寸 (长 × 宽 × 高)(mm)	10200×2500×3980
	Wheel Base(mm)	轴距 (mm)	4090+1350
	Min. Ground Clearance(mm)	最小离地间隙 (mm)	≥240
	Min. Turning Diameter(m)	最小转弯直径 (m)	20
	Fuel Consumption(L/100km)	百公里油耗 (L/100km)	≤45
	Braking Distance(V ₀ =30km/h)(m)	制动距离 (V ₀ =30km/h) (m)	≤10(Full load) ≤9(Empty load)
发动机参数 Engine	Bore(mm)×Stroke(mm)	缸径 (mm)× 行程 (mm)	φ126×130
	Displacement(L)	排量 (L)	9.726
	Rated Power/Rev Speed(kW/rpm)	额定功率 / 转速 (kW/rpm)	247/1900
	Max. Torque/Rev Speed(N.m/rpm)	最大扭矩 / 转速 (N.m/rpm)	1550/1200~1500
	Emissions	排放标准	China V
上装参数 Drum	Capacity(m³)	搅动容量 (m³)	12
	Feeding Speed(m³/min)	进料速度 (m³/min)	≥8
	Discharge Speed(m³/min)	出料速度 (m³/min)	≥5
	Discharge Residual Rate	出料残余率	≤0.5%
	Slump(mm)	坍落度范围 (mm)	50~210
	Water Tank Capacity(L)	水箱容积 (L)	400
	Water Pressure(MPa)	工作压力 (Mpa)	0.35~0.38
	Reducer	减速机	PMB7.1
	Hydraulic Pump	油泵	三一 SANY P4VC090NHW
	Motor	马达	三一 SANY M2F090NCWV
底盘配置 Chassis	Engine Model	发动机	潍柴 Weichai WP10.336E53
	Gear-box	变速箱	法士特 Fast 9JS150TA-B
	Front Axle(t)	前桥 (t)	9
	Intermediate, Rear Axle(t)	中、后桥 (t)	2×13
	Cab	驾驶室	三一 SANY Cab CB318
	Tyre	轮胎	11.00R20
	Brake	制动器	Front: φ410mm × 160mm Rear: φ410mm × 220mm
	Fuel Tank Capacity(L)	燃油箱 (L)	300

OPTIONAL CONFIGURATION

可选配置

Model 型号		SY312C-6W(V)
功能选配 Optional Functions	Item 名称	●Standard ○Option -None ● 标配 ○ 选配 - 无
	Engine	○ 潍柴 Weichai WP10.350E53
	Oil Pump	○ 力士乐 Rexroth A10VGT090
	Motor	○ 力士乐 Rexroth A2FMT090
	GPS Terminal-EMEA	树根互联盒子 ○
	Mixer drum forward and backward rotation sensor (GPS Terminal-EMEA must be installed)	搅拌筒正反转 (必须安装树根盒子) ○
	Blind Zone Radar	盲区雷达 ●
	Rear View Camera	倒车摄像头 ●
	ABS(Axles need replacing)	ABS (需换车桥) ●
	Cab Roof Light	驾驶室警示顶灯 ○
	Tyre	轮胎 ○ 12.00R20 ○ 12R22.5
	Mixer Drum Cleaning Device	搅拌筒清扫杆 ○
	Hopper Components	接料斗 ●
	Special Coating	特殊涂装 ○
	Water Tank Capacity	水箱容积 ○ 600L AI 铝合金 ○ 800L AI 铝合金
	the Upper Guardrail Protecting Net of Mixer Drum	搅拌筒上部护栏保护筛网 -



SANY®

SY412C-8(V)-D MIXER TRUCK

SY412C-8(V)-D 搅拌车

ONLY
1
UNIT

LEADING EDGES STEERING TECHNOLOGY

The large displacement power steering pump reduces operator effort by 40%. By optimizing chassis geometry and front the front axle steering angle, the turning circle is reduced by 15%.

LOW DECK TECHNOLOGY

The truck is equipped with ultra-high strength, integrated auxiliary frame to ensure its stability and high strength. It adapts to various rough conditions meanwhile prolongs its service life.

IMPROVED BRAKING

By making full use of engine braking, braking distance has been reduced by 15% and brake lining wear is decreased by 50%. Sany uses a high volume air compressor, high quality piping, and new sealing technology that shortens air and build up time to quicken brake response time.

ANTI-BUILDUP TECHNOLOGY

An innovative front taper and ball-crown connecting structure, the mixer is shaped to prevent accumulation at front and rear tapers. The flushing device is installed at the rear taper, in order to clear accumulated concrete in the dead space. The residual rate at the discharging outlet is declined by 0.4%.

ENERGY-SAVING TECHNOLOGY

The truck is light in weight but it undertakes large weight. With dual-circuit power mode, the engine matches the transmission well. It saves 10% of fuel consumption.



TECHNICAL PARAMETER

技术参数

Model 型号			SY412C-8(V)-D
整车参数 Overall Parameters	Code	编码	GJB100000133
	Rudder Direction	左右舵	Left 左舵
	Curb Weight(kg)	整备质量 (kg)	13900
	Front Axle Load(kg)	前轴质量 (整备)(kg)	6200
	Intermediate, Rear Axle Load(kg)	中后轴质量 (整备)(kg)	7700
	Full Load(kg)	满载总质量 (kg)	31000
	Front Axle Load Capacity(kg)	前轴最大允许质量 (kg)	13000
	Intermediate, Rear Axle Load Capacity(kg)	中后轴最大允许质量 (kg)	18000
	Dimension (L×H×W)(mm)	整车外形尺寸 (长 × 宽 × 高)(mm)	9800×2525×3980
	Wheel Base(mm)	轴距 (mm)	1700+3175+1350
	Axle track(mm)	轮距 (前 / 后)(mm)	2048/1860
	Min. Ground Clearance(mm)	最小离地间隙 (mm)	300
	Front / Rear Overhang	前悬 / 后悬 (mm)	1480/1995
	Max. Speed(km/h)	最高车速 (km/h)	85
	Gradeability	最大爬坡度	30%
	Min. Turning Diameter(m)	最小转弯直径 (m)	22
	Sliding Distance(m)	滑行距离 (V ₀ =50km/h) (m)	≥700
	Fuel Consumption(L/100km)	百公里油耗 (L/100km)	≤35
	Braking Distance(V ₀ =30km/h)(m)	制动距离 (V ₀ =30km/h) (m)	≤9(Full load); ≤8(Empty load)
	Rated Passenger	额定乘员	2 人
	Power Takeoff	取力器 (N.m)	350
	Drive	驱动形式	8×4
发动机参数 Engine	Bore(mm)×Stroke(mm)	缸径 (mm)× 行程 (mm)	φ112×130
	Displacement(L)	排量 (L)	7.684
	Rated Power/Rev Speed(kW/rpm)	额定功率 / 转速 (kW/rpm)	224/2500
	Net Power(kW/rpm)	净功率 (kW/rpm)	221/2500
	Max. Torque/Rev Speed(N.m/rpm)	最大扭矩 / 转速 (N.m/rpm)	1000/1500
	Emissions	排放标准	China V
搅拌桶 Drum	Capacity(m³)	搅动容量 (m³)	12
	Feeding Speed(m³/min)	进料速度 (m³/min)	≥8
	Discharge Speed(m³/min)	出料速度 (m³/min)	≥5
		搅拌筒转速 (rpm)	0~14
	Discharge Residual Rate	出料残余率	< 0.5%
	Slump(mm)	坍落度范围 (mm)	50~210

Model 型号			SY412C-8(V)-D
液压系统 Hydraulic System	Reducer	减速机	普曼普 PMB7.1
			75000Nm
	Hydraulic Pump	油泵	三一 Sany HA4VTG105HW
			400bar
	Motor	马达	三一 Sany HAA2FM90
			400bar
	Water Tank Capacity(L)	水箱容积 (L)	400
	Water Pressure(MPa)	工作压力 (Mpa)	0.35~0.38
底盘配置 Chassis	Chassis	底盘	三一 Sany SYM1317T1E
	Engine Model	发动机	日野 Hino J08E-YA
	Gear-box	变速箱	法士特 Fast 12JSD160T
	Front Axle(t)	前桥 (t)	2×7.5
	Intermediate, Rear Axle(t)	中、后桥 (t)	2×13
	Cab	驾驶室	三一 CB318 驾驶室 Sany Cab CB318
	Tyre	轮胎	12R22.5
	Brake	制动器	气压双回路鼓式制动 Pneumatic dual- circuit braking system with drum
	Fuel Tank Capacity(L)	燃油箱 (L)	300



SANY®

SY412C-8(V)-D MIXER TRUCK

SY412C-8(V)-D 搅拌车

ONLY
3
UNITS

LEADING EDGES STEERING TECHNOLOGY

The large displacement power steering pump reduces operator effort by 40%. By optimizing chassis geometry and front the front axle steering angle, the turning circle is reduced by 15%.

LOW DECK TECHNOLOGY

The truck is equipped with ultra-high strength, integrated auxiliary frame to ensure its stability and high strength. It adapts to various rough conditions meanwhile prolongs its service life.

IMPROVED BRAKING

By making full use of engine braking, braking distance has been reduced by 15% and brake lining wear is decreased by 50%. Sany uses a high volume air compressor, high quality piping, and new sealing technology that shortens air and build up time to quicken brake response time.

ANTI-BUILDUP TECHNOLOGY

An innovative front taper and ball-crown connecting structure, the mixer is shaped to prevent accumulation at front and rear tapers. The flushing device is installed at the rear taper, in order to clear accumulated concrete in the dead space. The residual rate at the discharging outlet is declined by 0.4%.

ENERGY-SAVING TECHNOLOGY

The truck is light in weight but it undertakes large weight. With dual-circuit power mode, the engine matches the transmission well. It saves 10% of fuel consumption.



TECHNICAL PARAMETER

技术参数

Model 型号			SY412C-8(V)-D
整车参数 Overall Parameters	Code	编码	GJB100000056
	Rudder Direction	左右舵	Left 左舵
	Curb Weight(kg)	整备质量 (kg)	13700
	Front Axle Load(kg)	前轴质量 (整备)(kg)	6000
	Intermediate, Rear Axle Load(kg)	中后轴质量 (整备)(kg)	7700
	Full Load(kg)	满载总质量 (kg)	31000
	Front Axle Load Capacity(kg)	前轴最大允许质量 (kg)	13000
	Intermediate, Rear Axle Load Capacity(kg)	中后轴最大允许质量 (kg)	18000
	Dimension (L×H×W)(mm)	整车外形尺寸 (长 × 宽 × 高)(mm)	9700×2500×3980
	Wheel Base(mm)	轴距 (mm)	1700+3175+1350
	Axle track(mm)	轮距 (前 / 后)(mm)	2048/1860
	Min. Ground Clearance(mm)	最小离地间隙 (mm)	300
	Front / Rear Overhang	前悬 / 后悬 (mm)	1480/1995
	Max. Speed(km/h)	最高车速 (km/h)	85
	Gradeability	最大爬坡度	30%
	Min. Turning Diameter(m)	最小转弯直径 (m)	22
	Sliding Distance(m)	滑行距离 (V ₀ =50km/h) (m)	≥700
	Fuel Consumption(L/100km)	百公里油耗 (L/100km)	≤35
	Braking Distance(V ₀ =30km/h)(m)	制动距离 (V ₀ =30km/h) (m)	≤9(Full load); ≤8(Empty load)
	Rated Passenger	额定乘员	2 人
	Power Takeoff	取力器 (N.m)	350
	Drive	驱动形式	8×4
发动机参数 Engine	Bore(mm)×Stroke(mm)	缸径 (mm)× 行程 (mm)	φ112×130
	Displacement(L)	排量 (L)	7.684
	Rated Power/Rev Speed(kW/rpm)	额定功率 / 转速 (kW/rpm)	224/2500
	Net Power(kW/rpm)	净功率 (kW/rpm)	221/2500
	Max. Torque/Rev Speed(N.m/rpm)	最大扭矩 / 转速 (N.m/rpm)	1000/1500
	Emissions	排放标准	China V
搅拌桶 Drum	Capacity(m³)	搅动容量 (m³)	12
	Feeding Speed(m³/min)	进料速度 (m³/min)	≥8
	Discharge Speed(m³/min)	出料速度 (m³/min)	≥5
		搅拌筒转速 (rpm)	0~14
	Discharge Residual Rate	出料残余率	< 0.5%
	Slump(mm)	坍落度范围 (mm)	50~210

Model 型号			SY412C-8(V)-D
液压系统 Hydraulic System	Reducer	减速机	普曼普 PMB7.1
			75000Nm
	Hydraulic Pump	油泵	三一 Sany HA4VTG105HW
			400bar
	Motor	马达	三一 Sany HAA2FM90
			400bar
	Water Tank Capacity(L)	水箱容积 (L)	400
	Water Pressure(MPa)	工作压力 (Mpa)	0.35~0.38
底盘配置 Chassis	Chassis	底盘	三一 Sany SYM1317T1E
	Engine Model	发动机	日野 Hino J08E-YA
	Gear-box	变速箱	法士特 Fast 12JSD160T
	Front Axle(t)	前桥 (t)	2×7.5
	Intermediate, Rear Axle(t)	中、后桥 (t)	2×13
	Cab	驾驶室	三一 CB318 驾驶室 Sany Cab CB318
	Tyre	轮胎	12R22.5
	Brake	制动器	气压双回路鼓式制动 Pneumatic dual- circuit braking system with drum
	Fuel Tank Capacity(L)	燃油箱 (L)	300





SYZ320C-8SQ(380) DUMP TRUCK

- ◆ Fully independent development, modern European muscle modeling design, spacious interior space and large storage space, ultra-high-strength body design, and lightweight body structure so as to meet customers' different road condition requirements
- ◆ Frame structure cab; body welded by the robot machine; certificated by direct impact and top pressure mandatory inspection regulations meeting European standards; sturdy and reliable cab integrally

TECHNICAL SPECIFICATIONS

Model 型号		SYZ320C-8SQ(380)
Code	主体编码	14499946
rudder direction	左右舵	左舵 Left
Gross Weight(kg)	整备质量 (kg)	15000
Full Load Weight(kg)	最大允许总质量 (kg)	45000
Dimension (L×W×H)(mm)	整车尺寸 (长 × 宽 × 高)(mm)	8970×2540×3580
Wheel Base(mm)	轴距 (mm)	4275+1400
Min. Ground Clearance(mm)	最小离地间隙 (mm)	320
Min. turning diameter(m)	最小转弯直径 (m)	18
Braking Distance V ₀ =30km/h(m)	制动距离 V ₀ =30km/h(m)	≤ 10(Full load) ; ≤ 9(Empty load)
Bore(mm)×Stroke(mm)	缸径 (mm)× 行程 (mm)	117×135
Displacement(L)	排量 (L)	8.7
Rated power/Rev Speed(kW/rpm)	额定功率 / 转速 (kW/rpm)	280/2200
Maximum torque/Rev Speed(N.m/rpm)	最大扭矩 / 转速 (N.m/rpm)	1550/1000-1500
Emission Standard	排放标准	国五 China V
Cargo capacity(m³)	货厢方量 (m³)	20
Cargo empty(mm)	货箱尺寸 (MM)	5800×2400×1500
Lifting angle(°)	举升角度 (°)	48
Lifting mode	举升方式	Front Lifting
Engine	发动机	三一 SANY D09C5-380E0
Gear-box	变速箱	12JSDX240TA
Front Axle	前桥 (t)	北奔 BEIBEN 7.5T
Middle, Rare axle	中、后桥 (t)	北奔 BEIBEN 16T
Cab	驾驶室	齐星驾驶室 Qixing Cab
Tyre	轮胎	12.00R20 18PR
Brake	制动器	鼓式制动器
Fuel Tank(L)	燃油箱 (L)	300

- ◆ In response to the low idling speed of Hino engines, a large-flow power steering pump has been developed so as to reduce steering force by 30% and greatly improve steering comfort.
- ◆ Axle housing with cast structure; variable cross-section strength design, high strength, and good rigidity; difficult deformation under heavy loads, thereby ensuring the matching accuracy of transmission parts such as gears, bearings, etc. under heavy load conditions and extending service life.



SYM3257ZZX1E DUMP TRUCK

- ◆ Fully independent development, modern European muscle modeling design, spacious interior space and large storage space, ultra-high-strength body design, and lightweight body structure so as to meet customers' different road condition requirements
- ◆ Frame structure cab; body welded by the robot machine; certificated by direct impact and top pressure mandatory inspection regulations meeting European standards; sturdy and reliable cab integrally
- ◆ In response to the low idling speed of Hino engines, a large-flow power steering pump has been developed so as to reduce steering force by 30% and greatly improve steering comfort.
- ◆ Axle housing with cast structure; variable cross-section strength design, high strength, and good rigidity; difficult deformation under heavy loads, thereby ensuring the matching accuracy of transmission parts such as gears, bearings, etc. under heavy load conditions and extending service life.

TECHNICAL SPECIFICATIONS

Model 型号		SYM3257ZZX1E
Code	主体编码	ZZX200000043
Rudder Direction	左右舵	左舵 Left
Drive Type	驱动形式	6×4
Cab	驾驶室	三一 CB318 驾驶室 Sany Cab CB318
Engine	发动机	三一动力 Sany D12.465
Transmission	变速箱	法士特 Fast 12JSDX240T
Emissions	排放标准	国五 China V
Front Axle(t)	前桥 (t)	三环 TRI-RING 9.5T
Drive Axle(t)	驱动桥 (t)	北奔 BEIBEN 16T
Ratio	桥速比	5.262
Frame(mm)	车架 (mm)	316×(8+8)
Wheel Base(mm)	轴距 (mm)	4200+1400
Kerb Weight(kg)	整备质量 (kg)	12500
Full Load Weight(kg)	满载重量 (kg)	25000
the Number of Leaf Spring	钢板弹簧 (片数)	10/12
Rim	钢圈 (inch)	8.75 Reinforced
Tyre	轮胎	12.00R20
Fuel Tank(L)	燃油箱 (L)	400
Dumpbox Type	货箱形式	U 型 U-type Upper Body
Dumpbox Dimensions(mm)	货箱尺寸 (mm)	6000×2400×1500
Dumpbox Thickness(mm)	货箱厚度 (mm)	底 10 边 8 Floor 10, Side 8
Dumpbox Material	货箱材质	NM400/LG700
Cylinder	油缸	SANY 4TG179



SYZ323C-8 DUMP TRUCK

- ◆ Fully independent development, modern European muscle modeling design, spacious interior space and large storage space, ultra-high-strength body design, and lightweight body structure so as to meet customers' different road condition requirements
- ◆ Frame structure cab; body welded by the robot machine; certificated by direct impact and top pressure mandatory inspection regulations meeting European standards; sturdy and reliable cab integrally

TECHNICAL SPECIFICATIONS

Model 型号		SYZ323C-8
Code	主体编码	14214458
Rudder Direction	左右舵	右舵 Right
Gross Weight(kg)	整备质量 (kg)	14500
Full Load Weight(kg)	最大允许总质量 (kg)	49000
Dimension (L×W×H)(mm)	整车尺寸 (长 × 宽 × 高)(mm)	9010×2530×3590
Wheel Base(mm)	轴距 (mm)	4300+1400
Frame(mm)	车架 (mm)	860×300×(8+6)
Min. Ground Clearance(mm)	最小离地间隙 (mm)	≥300
Min. turning diameter(m)	最小转弯直径 (m)	≤18
Braking Distance V ₀ =30km/h(m)	制动距离 V ₀ =30km/h(m)	≤10(Full load); ≤9(Empty load)
Engine	发动机	日野 Hino J08E-UP
Displacement(L)	排量 (L)	7.684
Rated Power/Rev Speed(kW/rpm)	额定功率 / 转速 (kW/rpm)	222/2500
Maximum Torgue/Rev Speed(N.m/rpm)	最大扭矩 / 转速 (N.m/rpm)	1000/1500
Emission Standard	排放标准	Euro III
Transmission	变速箱	法士特 Fast 10JSD120T
Front Axle(t)	前桥 (t)	9.5
Middle, Rare Axle(t)	中、后桥 (t)	2×16
Cab	驾驶室	三一 Sany Cab CB318 驾驶室
Tyre	轮胎	12.00R20
Brake	制动型式	Pneumatic dual-circuit braking system with drum
Fuel Tank(L)	燃油箱 (L)	300
Cargo Capacity(m³)	货厢方量 (m³)	23
Cargo Empty(mm)	货箱尺寸 (mm)	6000×2300×1700
Lifting Angle(°)	举升角度 (°)	45
Lifting Mode	举升方式	前举 Front Lifting
GPS Terminal-EMEA	树根互联	○
ABS	ABS	○ Axles need replacing

- ◆ In response to the low idling speed of Hino engines, a large-flow power steering pump has been developed so as to reduce steering force by 30% and greatly improve steering comfort.
- ◆ Axle housing with cast structure; variable cross-section strength design, high strength, and good rigidity; difficult deformation under heavy loads, thereby ensuring the matching accuracy of transmission parts such as gears, bearings, etc. under heavy load conditions and extending service life.

ONLY
1
UNIT



SYZ326C-8W(R) DUMP TRUCK

- ◆ Reliable and high quality. Manufactured by Sany, which is ranked 2nd worldwide and the 1st nationwide in construction machinery industry.
 - ◆ SANY pump truck patented steel technology for chassis frame and leaf spring, the bearing performance is improved by 10%.
 - ◆ Stringent testing in Sany's self-built test field. Road test with fully loaded and high intensity for 30,000 Km, which is five times more intensive than the one done in Hainan National test field.
- ◆ Beiben Axle constitute the golden power train. Optimizing the configuration according to the application, the climbing performance is improved by 10% and the fuel consumption decreases of 5%.
 - ◆ Engine is reliable, low maintainance cost,and powerful.
 - ◆ transmission, standard 2400 N.m torque. Higher transmission efficiency, more stable output efficiency.

TECHNICAL SPECIFICATIONS

Model 型号		SYZ326C-8W(R)
Code	主体编码	ZZX200000045
Rudder Direction	左右舵	右舵 Right
Gross Weight(kg)	整备质量 (kg)	16500
Full Load Weight(kg)	最大允许总质量 (kg)	55500
Dimension (L×W×H)(mm)	整车尺寸 (长 × 宽 × 高)(mm)	9150×2540×3580
Wheel Base(mm)	轴距 (mm)	4200+1400
Frame(mm)	车架 (mm)	860×316×(8+8)
Min. Ground Clearance(mm)	最小离地间隙 (mm)	≥300
Min. turning diameter(m)	最小转弯直径 (m)	≤22
Braking Distance V ₀ =30km/h(m)	制动距离 V ₀ =30km/h(m)	≤10(Full load); ≤9(Empty load)
Engine	发动机	潍柴 Weichai WP12.430E201
Displacement(L)	排量 (L)	11.596
Rated Power/Rev Speed(kW/rpm)	额定功率 / 转速 (kW/rpm)	316/1900
Maximum Torgue/Rev Speed(N.m/rpm)	最大扭矩 / 转速 (N.m/rpm)	2000/1000-1400
Emission Standard	排放标准	Euro II
Transmission	变速箱	法士特 Fast 12JSDX240T
Front Axle(t)	前桥 (t)	9T
Middle, Rare Axle(t)	中、后桥 (t)	2×16T
Cab	驾驶室	三一 Sany Cab CB318 驾驶室
Tyre	轮胎	12.00R20
Brake	制动型式	Pneumatic dual-circuit braking system with drum
Fuel Tank(L)	燃油箱 (L)	400
Cargo Capacity(m³)	货厢方量 (m³)	26
Cargo Empty(mm)	货箱尺寸 (mm)	6200×2350×1800
Lifting Angle(°)	举升角度 (°)	45
Lifting Mode	举升方式	前举 Front Lifting
GPS Terminal-EMEA	树根互联	○
ABS	ABS	○ Axles need replacing

- ◆ The standard 16T Beiben cast steel axles, military quality, safe, reliable and performa qulity work.
- ◆ equipped with high-end cab, large space, luxury interior, the integration of driving entertainment.
 - ◆ Integrally stamped and formed cabin frame, meet the European certification of positive impact and top pressure inspection.
 - ◆ layout, lower center of grvity that prevents rollovers, excellent ground clearance.



SYM3312ZZX1E DUMP TRUCK

- ◆ Fully independent development, modern European muscle modeling design, spacious interior space and large storage space, ultra-high-strength body design, and lightweight body structure so as to meet customers' different road condition requirements
- ◆ Frame structure cab; body welded by the robot machine; certificated by direct impact and top pressure mandatory inspection regulations meeting European standards; sturdy and reliable cab integrally

TECHNICAL SPECIFICATIONS

Model 型号		SYM3312ZZX1E
Code	主体编码	ZZX200000063
Rudder Direction	左右舵	左舵 Left
Drive Type	驱动形式	8×4
Cab	驾驶室	三一 CB318 驾驶室 Sany Cab CB318
Engine	发动机	三一动力 Sany D12.435
Emissions	排放标准	国五 China V
Transmission	变速箱	法士特 Fast 12JSDX240T
Front Axle(t)	前桥 (t)	汉德 (曼) HANDE (MAN) 7.5T
Drive Axle(t)	驱动桥 (t)	汉德 HANDE 16T
Ratio	桥速比	5.262
Frame(mm)	车架 (mm)	300×(8+4)
Wheel Base(mm)	轴距 (mm)	2000+3900+1400
Kerb Weight(kg)	整备质量 (kg)	17065
the Number of Leaf Spring	钢板弹簧 (片数)	8/8/12
Rim	钢圈 (inch)	8.5
Tyre	轮胎	12.00R20
Fuel Tank(L)	燃油箱 (L)	400
Dumpbox Type	货箱形式	田字格 Rectangle Cargo Body
Dumpbox Dimensions(mm)	货箱尺寸 (mm)	7600×2350×1500
Dumpbox Thickness(mm)	货箱厚度 (mm)	底 8 边 6 Floor 8, Side 6
Dumpbox Material	货箱材质	NM400/LG700
Cylinder	油缸	SANY 5TG169

- ◆ In response to the low idling speed of Hino engines, a large-flow power steering pump has been developed so as to reduce steering force by 30% and greatly improve steering comfort.
- ◆ Axle housing with cast structure; variable cross-section strength design, high strength, and good rigidity; difficult deformation under heavy loads, thereby ensuring the matching accuracy of transmission parts such as gears, bearings, etc. under heavy load conditions and extending service life.

SANY®

SPR260C-8 PNEUMATIC TYRE ROLLER

SPR260C-8 轮胎压路机

HYDRAULIC BRAKE SYSTEM

- ◆ Hydraulic all-wheel braking is engaged upon engine or transmission failure
- ◆ Braking distance is 50% less than similar equipment
- ◆ Transaxle brake is applied when the equipment stops without the need for hand brake

AUTOMATIC INFLATION SYSTEM

- ◆ Tire pressure is adjustable from within the cab
- ◆ Even and consistent air pressure ensures compaction quality
- ◆ Air pressure is maintained even when a tire has a slow leak

HYDRAULIC DRIVE SYSTEM

- ◆ Continuously variable drive system provides smooth starting and stopping
- ◆ Controls are easy to learn and easy to operate

AUTOMATIC OIL-SPRAYING TECHNOLOGY

- ◆ Pneumatic powered automatic oil-spraying prevents asphalt from sticking to the tires
- ◆ Two minute suction refill of oil tank eliminates the manual refilling
- ◆ Eliminates the safety hazard of manually applying oil

ONLY
1
UNIT



全液压驱动系统

- ◆ 无级变速，起停平稳，减小了对路面的冲击
- ◆ 操作简单，上手快，劳动强度小

集中自动充气系统

- ◆ 自动充气，气压可调
- ◆ 气压均匀一致，压实平整
- ◆ 即使轮胎漏气也可正常持续施工

卓越的压实能力

- ◆ 满足沥青路面，水稳基层等各种压实需要

首创自动喷油技术

- ◆ 行业首创自动喷油技术，确保轮胎不粘沥青，省钱、省心
- ◆ 2分钟内即可加满油箱，无需人工倒油
- ◆ 消除压路机行业人工抹油的安全隐患

液压轮边制动技术

- ◆ 全液压制动可在发动机熄火，杜绝安全隐患
- ◆ 制动距离与行业平均距离相比短 50%，彻底消除制动安全隐患
- ◆ 驱动桥常闭驻车制动，停机就制动，不需拉手刹

EXCEPTIONAL COMPACTION PERFORMANCE

- ◆ Meeting the demands of compaction for asphalt road and cement stabilized base

TECHNICAL PARAMETER

技术参数

SPR260C–8 轮胎压路机技术参数

Technical Parameter of SPR260C-8 Pneumatic Roller

Model		SPR260C-8
压实性能参数 Compaction	物料编码 Code	14349470
	最大整机质量 Max. Operating Weight(kg)	26000
	最小整机质量 Min. Operating Weight(kg)	11000
	接地比压 Ground Pressure(kPa)	200~520
	单胎载荷 Single Tire Load(t)	2.88
	充气压力 Tire Inflation Pressure(kPa)	200~800
	压实宽度 Compaction Width(mm)	2368
	重叠宽度 Overlap(mm)	63
机动性能参数 Maneuver Ability	工作速度 Working Speed(km/h)	0~8
	行驶速度 Travel Speed(km/h)	0~14
	转向角度 Streering Angle(°)	30
	理论爬坡能力 Gradeability	25%
	摇摆距 Swing Distance(mm)	50
	离地间隙 Ground Clearance(mm)	350
	轴距 Wheelbase(mm)	4170
发动机 Engine	最小转弯外直径 Min. Turning Outside Diameter (mm)	19000
	供应商 Brand	WEICHAI
	型 Model	WP6G190E301
	排放 Emission	CHINA III
容量参数 Capacity	功率 Power(kW)	140
	蓄电池 Accumulator(V×Ah)	24×120
	水箱 Water Tank(L)	500
	燃油箱 Fuel Tank(L)	200
	液压油箱 Hydraulic Oil Tannk(L)	100

轮胎压路机 SPR260C–8 标配选配表

Pneumatic Rollers SPR260C-8 Standard and Optional Configurations

配置类型 Config	配置名称 Systems	物料名称 Description	数量 / 台 Quantity	详细说明 Details	备注 Remarks
标配配置 Standard Configuratoin	主机 Main Machine	SPR260C-8 轮胎 压路机标配 SPR260C-8 Pneumatic Tyre Rollers, Standard	1	1.Engine 发动机 2.Travel Pump 行驶泵 3.Travel Motor 行驶马达 4.Transaxle 驱动桥 5. Cab 驾驶室 6. Front Covering Part 前覆盖件 7. Front Wheel Assembly 前轮总成 8. Rear Wheel Assembly 后轮总成 9. Electrical System 电气系统 10.Frame Assembly 车架总成	
可选配置 Optional Configuratoin	空调 Air Conditioner	空调系统 Air Condition System	1	配备驾驶室以便于在风沙大， 极端温度条件下工作 Work in windy, sandy, and extreme temperature conditions	可选 Optional
	倒车可视 Rear Vision System	倒车可视 Rear Vision System	1	适合用于不开阔的路况，例如居民区 Work in confined areas such as residential areas	可选 Optional
	集中充气 & 自动喷油 Centralized Inflation & Auto-Oil-spraying System	集中充气 & 自动喷油 Centralized Inflation & Auto-Oil-spraying System	1	高海拔路况 High-grade road works	可选 Optional

轮胎压路机 SPR260C–8 尺寸参数

Dimensions of SPR260C-8 Pneumatic Roller

Size Code	SPR260C-8
A (mm)	4170
B (mm)	2368
H (mm)	3280
K (mm)	350
L (mm)	5435
W (mm)	2279



SANY®

STG140C-8 MOTOR GRADER

STG140C-8 平地机

RELIABLE WITH HEAVY LOAD, COMFORTABLE WITH HIGH EFFICIENCY

重载可靠

安全舒适

RELIABLE, EFFICIENT AND COMFORTABLE

- ◆ **Efficient and energy-saving:** heavy-load engine and VHP technology.
- ◆ **Reliable with heavy load:** reliable rear axle and work implements of rotary bearing structure.
- ◆ **Humanized design:** safe and comfortable ride and operation experience.
- ◆ **Comfortable and convenient:** easy maintenance and low operation cost.

ONLY
1
UNIT



高效节能

重载发动机及变功率技术

人性化设计

安全舒适的驾乘体验

重载可靠

回转支承结构作业装置及后桥

使用便捷

维修保养方便，使用成本低

TECHNICAL PARAMETER

技术参数

STG140C-8 平地机技术参数

Technical Parameter of STG140C-8 Motor Grader

型号		STG140C-8 (Code: PDJ100000043)
动力系统参数	供应商	东康
	排放等级	国Ⅲ
	型号	QSB4.5
	额定功率 (kW)	97
	额定转速 (rpm)	2200
	峰值扭矩 (Nm)	600
尺寸参数	标准型 (无配重)：长 × 宽 × 高 (mm)	8210×2480×3460
	前后桥距 (mm)	6180
	中后轮轴距 (mm)	1540
	后桥离地高度 (mm)	360
质量载荷参数	标准型 (无配重) (kg)	11700 (美驰)
作业装置参数	铲刀长 (mm)	标配 3050 (10ft)
	铲刀高度 (mm)	620
	刀倾斜角度 (°)	90
	铲刀回转角度 (°)	360
	挡位数	前 6 后 3
	前进挡车速 (km/h)	最大速度：42
	后退挡车速 (km/h)	28
运动参数	前轮转向角度 (°)	45
	前轮倾斜角度 (°)	17
	铰接转向角度 (°)	25
	前桥摆动角度 (°)	16
	轮胎型号	13.00-24(16PR)
	液压油箱最大容积 (L)	140
	燃油箱最大容积 (L)	330

Model		STG140C-8 (Code: PDJ100000043)
Power System Spec.	Supplier	DONGFENG CUMMINS
	Emission	CHINA III
	Model	QSB4.5
	Rated power (kW)	97
	Rated rotation speed (rpm)	2200
	Peak torque (Nm)	600
Dimensions	Standard (without counterweight): L*W*H (mm)	8210×2480×3460
	Front and rear axle base (mm)	6180
	Middle and rear wheel base (mm)	1540
	Clearance from rear axle to ground (mm)	360
Load Spec.	Standard (without counterweight) (kg)	11700 (Meritor)
Operating Device Spec.	Length of blade (mm)	Standard: 3050 (10ft)
	Height of blade (mm)	620
	Tilt angle (°)	90
	Turning angle (°)	360
	Gears	6 forward and 3 reverse
	Forward speed (km/h)	max speed: 42
	Reverse speed (km/h)	28
Running Spec.	Steering angle of front wheel (°)	45
	Tilt angle of front wheel (°)	17
	Articulated steering angle (°)	25
	Oscillation angle of front axle (°)	16
	Model of tire	13.00-24(16PR)
Tank Capacity	Max. capacity of hydraulic oil tank (L)	140
	Max. capacity of fuel tank (L)	330

SANY®

STG170C-8S MOTOR GRADER

STG170C-8S 平地机

RELIABLE WITH HEAVY LOAD, COMFORTABLE WITH HIGH EFFICIENCY

重载可靠

安全舒适

RELIABLE, EFFICIENT, SAFE AND CONVENIENCE

- ◆ **Efficient:** heavy-load + engine and DC intake system.
- ◆ **Reliable:** high-strength work implement + slewing bearing rear axle.
- ◆ **Safe:** ROPS safe shed + disc type brake system.
- ◆ **Convenient:** 7 inch touch type display + fault self-diagnosis system + intelligent maintenance reminder.

ONLY
78
UNITS



TECHNICAL PARAMETER

技术参数

STG170C-8S 平地机技术参数

Technical Parameter of STG170C-8S Motor Grader

型号		STG170C-8S (Code: PDJ100000042)
动力系统参数	供应商	潍柴动力
	排放等级	国Ⅲ
	型号	WP6G160E330
	额定功率 (kW)	118
	额定转速 (rpm)	2200
	峰值扭矩 (Nm)	665
尺寸参数	标准型 (无配重)：长 × 宽 × 高 (mm)	8800×2500×3500
	前后桥距 (mm)	6150
	中后轮轴距 (mm)	1540
	后桥离地高度 (mm)	400
质量载荷参数	标准型 (无配重) (kg)	13700 (美驰)
作业装置参数	铲刀长 (mm)	标配 3660 (12ft)
	铲刀高度 (mm)	620
	刀倾斜角度 (°)	90
	铲刀回转角度 (°)	360
	挡位数	前 6 后 3
	前进挡车速 (km/h)	最大速度：42
	后退挡车速 (km/h)	28
运动参数	前轮转向角度 (°)	40
	前轮倾斜角度 (°)	17
	铰接转向角度 (°)	25
	前桥摆动角度 (°)	16
	轮胎型号	14.00-24(16PR)
	液压油箱最大容积 (L)	140
	燃油箱最大容积 (L)	330

Model		STG170C-8S (Code: PDJ100000042)
Power System Spec.	Supplier	WEICHAI
	Emission	CHINA III
	Model	WP6G160E330
	Rated power (kW)	118
	Rated rotation speed (rpm)	2200
	Peak torque (Nm)	665
Dimensions	Standard (without counterweight): L*W*H (mm)	8800×2500×3500
	Front and rear axle base (mm)	6150
	Middle and rear wheel base (mm)	1540
	Clearance from rear axle to ground (mm)	400
Load Spec.	Standard (without counterweight) (kg)	13700 (Meritor)
Operating Device Spec.	Length of blade (mm)	Standard: 3660(12ft)
	Height of blade (mm)	620
	Tilt angle (°)	90
	Turning angle (°)	360
	Gears	6 forward and 3 reverse
	Forward speed (km/h)	max speed:42
	Reverse speed (km/h)	28
Running Spec.	Steering angle of front wheel (°)	40
	Tilt angle of front wheel (°)	17
	Articulated steering angle (°)	25
	Oscillation angle of front axle (°)	16
	Model of tire	14.00-24(16PR)
Tank Capacity	Max. capacity of hydraulic oil tank (L)	140
	Max. capacity of fuel tank (L)	330

SANY®

STG190C-8S MOTOR GRADER

STG190C-8S 液力式平地机

RELIABLE WITH HEAVY LOAD, COMFORTABLE WITH HIGH EFFICIENCY

重载可靠

安全舒适

RELIABLE, EFFICIENT AND COMFORTABLE

- ◆ **Efficient and energy-saving:** heavy-load engine and VHP technology.
- ◆ **Reliable with heavy load:** reliable rear axle and work implements of rotary bearing structure.
- ◆ **Humanized design:** safe and comfortable ride and operation experience.
- ◆ **Comfortable and convenient:** easy maintenance and low operation cost.

ONLY
1
UNIT



高效节能

重载发动机及变功率技术

人性化设计

安全舒适的驾乘体验

重载可靠

回转支承结构作业装置及后桥

使用便捷

维修保养方便，使用成本低

TECHNICAL PARAMETER

技术参数

型号 Model		STG190C-8S
动力系统参数 Power System Spec.	供应商 Supplier	DONGFENG CUMMINS
	排放等级 Emission	EU Stage II
	型号 Model	6BTAA5.9-C190- II
	额定功率 (kW) Rated Power	142
	额定转速 (rpm) Rated Rotation Speed	2000
	峰值扭矩 (Nm) Peak Torque	800
尺寸参数 Dimensions	标准型 (无配重) : 长 × 宽 × 高 (mm) Standard (without counterweight): L×W×H	9340×2740×3348
	前后桥距 (mm) Front and Rear Axle Base	6310
	中后轮轴距 (mm) Middle and Rear Wheel Base	1538
	后桥离地高度 (mm) Clearance from Rear Axle to Ground	410
质量载荷参数 Load Spec.	标准型 (无配重) (kg) Standard (without counterweight)	15600
作业装置参数 Operating Device Spec.	铲刀长 (mm) Length of Blade	3660(12ft) (standard)
	铲刀高度 (mm) Height of Blade	620
	铲刀倾斜角度 (°) Tilt Angle"	±90
	铲刀回转角度 (°) Turning Angle	360
	铲刀最大提升高度 (mm) Max. Lift above Ground	480
	铲刀最大铲土深度 (mm) Max. Depth of Cut	630
运动参数 Running Spec.	铲刀切削角范围 (°) Blade Tip Range"	25~75
	挡位数 Gears	前 6 后 3 6 Forward and 3 Reverse
	前进挡车速 (km/h) Forward Speed	5/9/12/19/24/38
	后退挡车速 (km/h) Reverse Speed	5/12/24
	前轮转向角度 (°) Steering Angle of Front Wheel	±45
	前轮倾斜角度 (°) Tilt Angle of Front Wheel	±17
	铰接转向角度 (°) Articulated Steering Angle	±27
	前桥摆动角度 (°) Oscillation Angle of Front Axle	±16
	轮胎型号 Model of tire	17.5-25(12PR)(standard)
油箱容积 Tank Capacity	液压油箱最大容积 (L) Max. capacity of hydraulic oil tank	140
	燃油箱最大容积 (L) Max. capacity of fuel tank	350

STANDARD & OPTIONAL CONFIGURATIONS

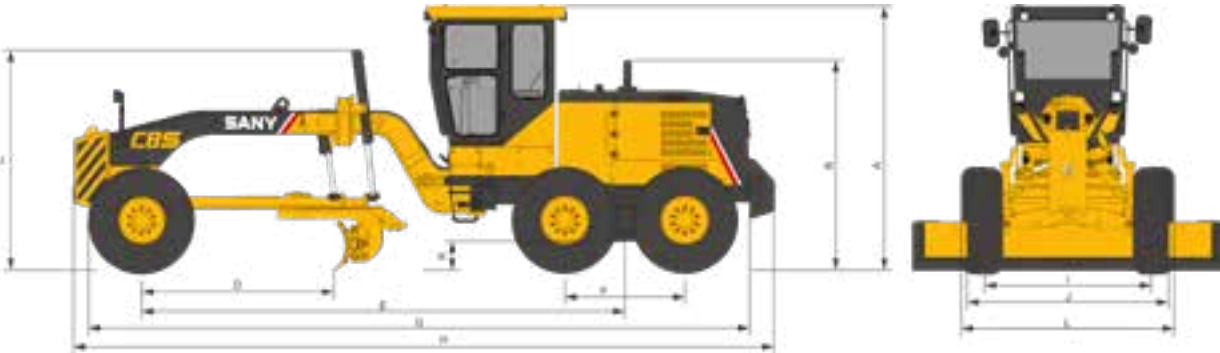
标配选配

型号 Model	标配 Standard	选配 Optional
STG190C-8S	12ft 铲刀 12ft Moldboard	14ft 铲刀 14ft Moldboard
	过载保护结构 Overload Protection Circle Drive	/
	空调 HVAC	/
	/	环境温度为 -20℃, 需加装进气预热系统 Intake Preheater (meet -20℃)
	/	倒车影像 Rear Camera
	/	前松土耙 Front Scarifier
	/	前推土板 Front Dozer Blade
	/	五齿后松土器 Five-tooth Rear Ripper

DIMENSIONS

尺寸参数

尺寸代号 Size No.	名称 Name	STG190C-8S
A	驾驶室顶部高度 (mm) Height to Top of Cab	3310
B	排气管高度 (mm) Height to Exhaust Pipe	2885
C	铲刀提升油缸顶部高度 (mm) Height to Top of Blade Lift Cylinder	2900
D	前桥至铲刀壁间距离 (mm) Length - Front Axle to Moldboard	2500
E	前后桥轴距 (mm) Wheel Base - between Front and Rear Axles	6082
F	中后轮轴距 (mm) Wheel Base - between Middle and Rear Wheel	1538
G	前轮至机器后端长度 (mm) Length - Front Tire to Rear of Machine	8580
H	全长 (mm) 标配 / 前推后松 Overall length - Standard / with Front Dozer Blade and Rear Ripper	9080/11100
I	后轮距 (mm) Width - Rear Tire Center Lines	2280/2170
J	前轮外侧宽度 (mm) Width - Outside Front Tires	2580
K	后桥离地间隙 (mm) Ground Clearance at Rear Axle	410





SANY HEAVY INDUSTRY CO., LTD.

SANY Industry Town, Changsha Economic and Technological
Development Zone, Hunan Province, China

Service Line: +86 4006 098 318

E-mail: crd@sany.com.cn

www.sanygroup.com

Distributor Info.

Due to our process of continuous innovation, materials and specifications are subject to change without notice.

© Printed in China Date: Mar. 2022